

# PORTO, PORTUGAL

Paulo Calçada, CEO

Porto Digital

GLOBAL CITY TEAM CHALLENGE SUPER ACTION CLUSTER SUMMIT

February 1 – 2, 2017 | *Portland, Oregon*



# Porto Case: Heterogeneous Sensing Platform for Efficient Mobility

**Porto.**



# Porto

In Numbers

**250.000** inhabitants

**1,8**

Million citizens in the metropolitan area

Intermodal transportation system

**17**

Municipalities in the Metropolitan area

**300**

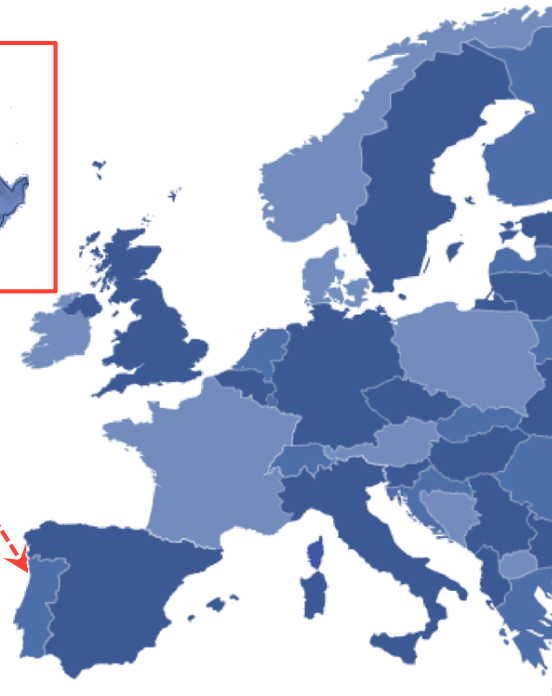
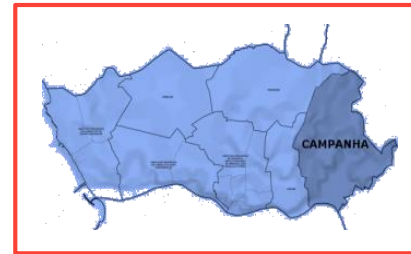
Startups

**1500**

Qualified jobs

**31.000**

University students



# Porto's Vision

- “Smart City” projects developed at a Urban Scale, corresponding to a step further regarding the district level strategy followed by the majority of European cities.
- The citizen is at the centre of smart decision making, promoting data driven decision making.
- Integrated vision of the management and operability of the city.
- Economic development and Job creation.





# Porto

Infrastructure

**22.000** connected things

**183Km**  
Optic fiber  
infrastructure

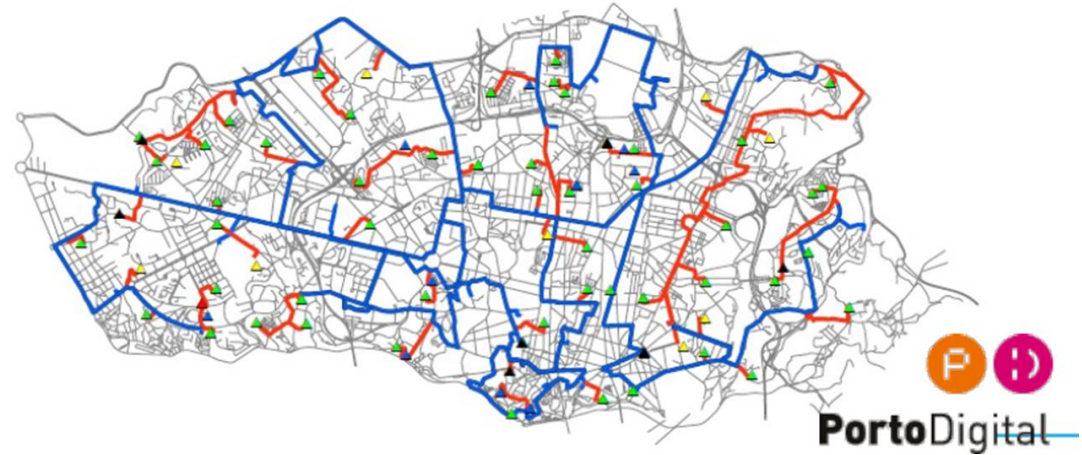
**+4000**  
Km linear optic  
fiber

**300**  
connected  
vehicles

**1500**  
Ibeacons, NFCs  
and Qrcodes  
foreseen

**FIWARE  
NODE**

**151.770**  
Water consumption  
sensors

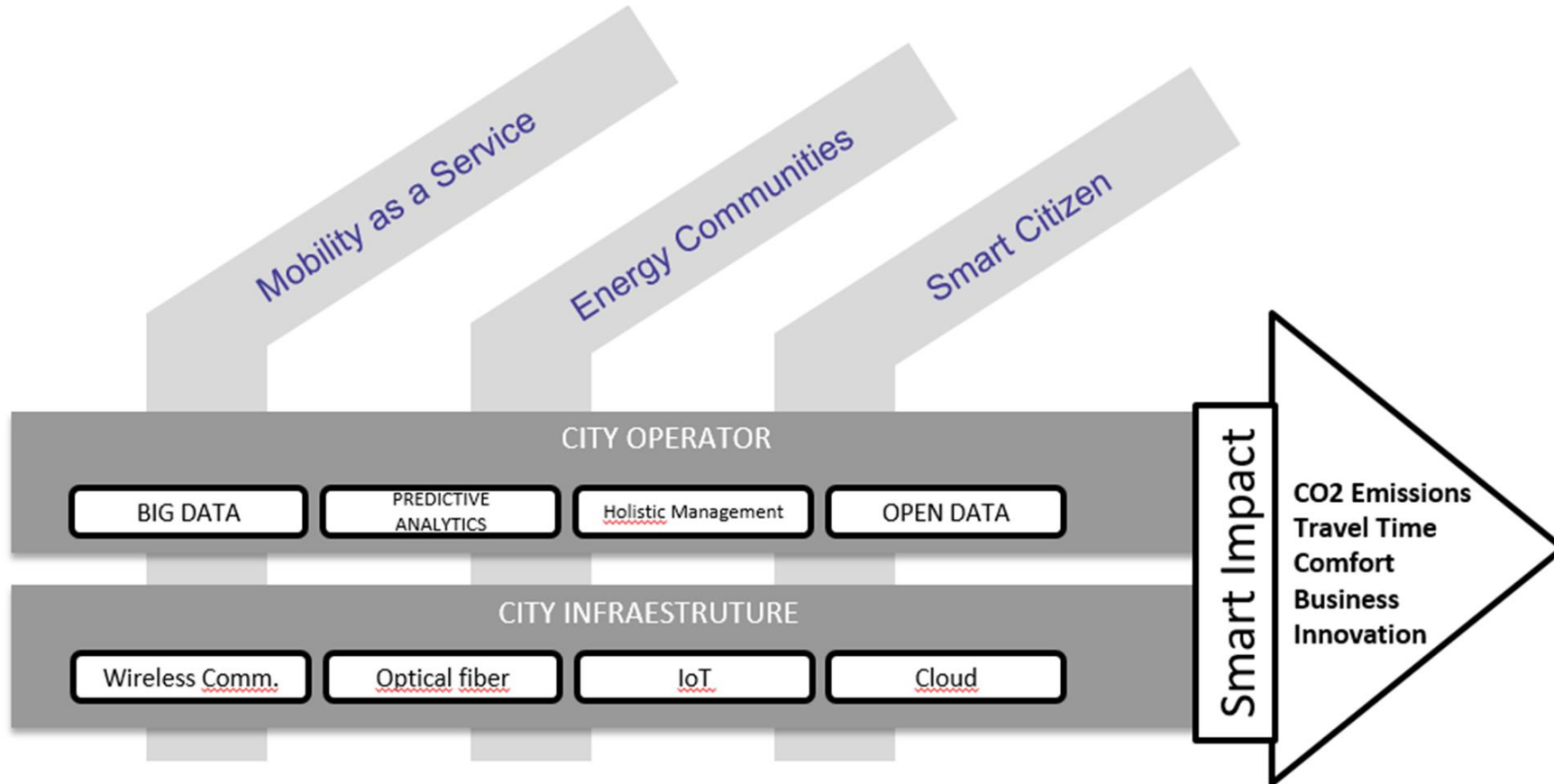


# City Operator and Infrastructure

- Develop a Urban Platform that integrates data flows within and across city systems;
- Enable the city to shift from fragmented operations to include predictive effective operations, and novel ways of engaging and serving city stakeholders;
- Promote an efficient data compilation and analysis with an impact on the living conditions and wellbeing of the city;
- Improve initiatives outcomes at local level and create a new level of integrated management services.



# Main Areas





# TRAFFIC MANAGEMENT SYSTEM

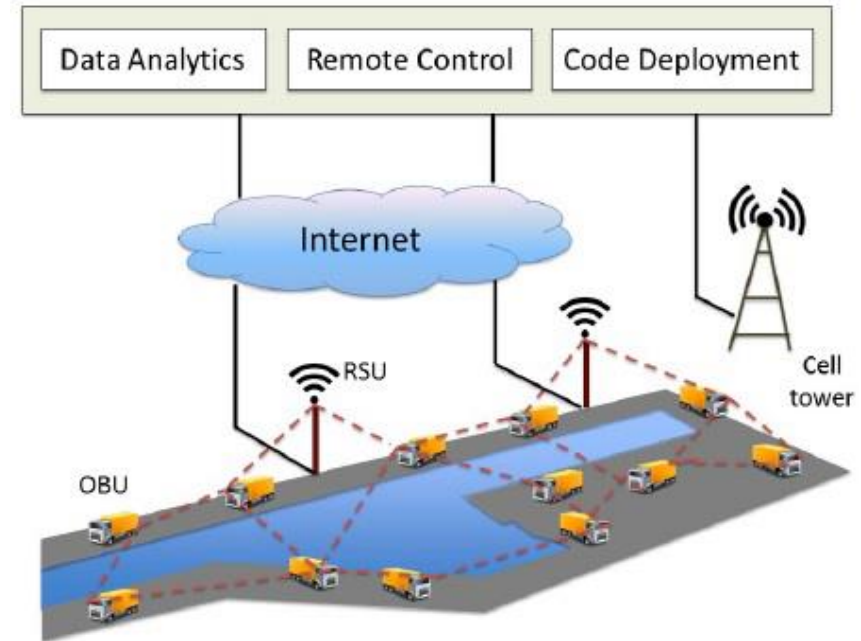
- 294 illumination equipment
- 128 have a remote control system with GERTRUDE software
- A total of 979 traffic sensors
- The system is implemented in 10 subareas, interlinked to a central server through a dedicated communication network.
- Porto has full actuated traffic lights, with traffic sensors in all the roads of intersection and semi-actuated traffic lights.



# VEHICULAR NETWORKING

## MAIN GOALS

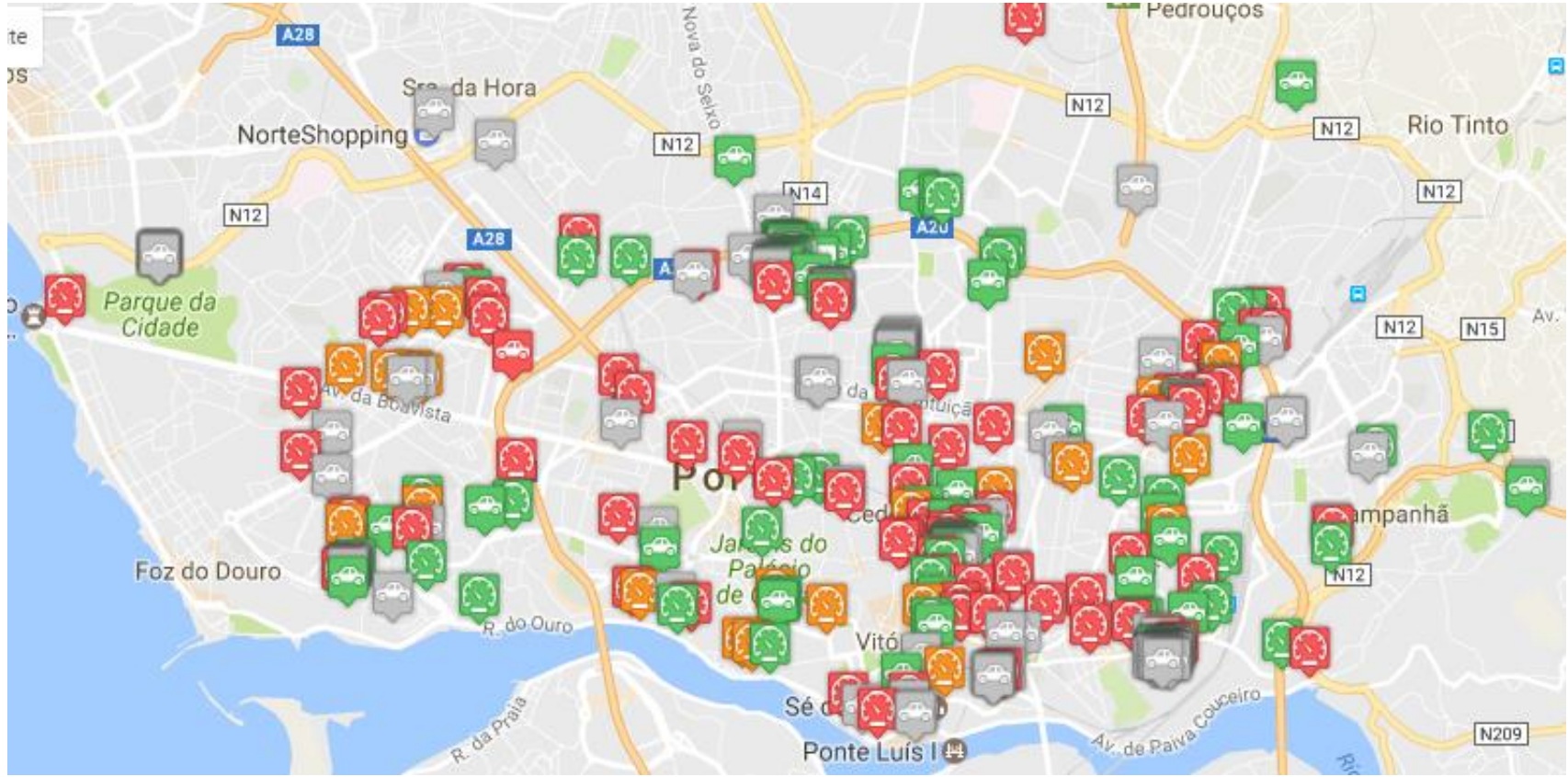
- vehicle-to-vehicle and vehicle-to-infrastructure connectivity
- provide Wi-Fi access to taxi and bus passengers
- get data from the vehicle's OBD unit
- Mobility Scanner



# Integrated Management Centre

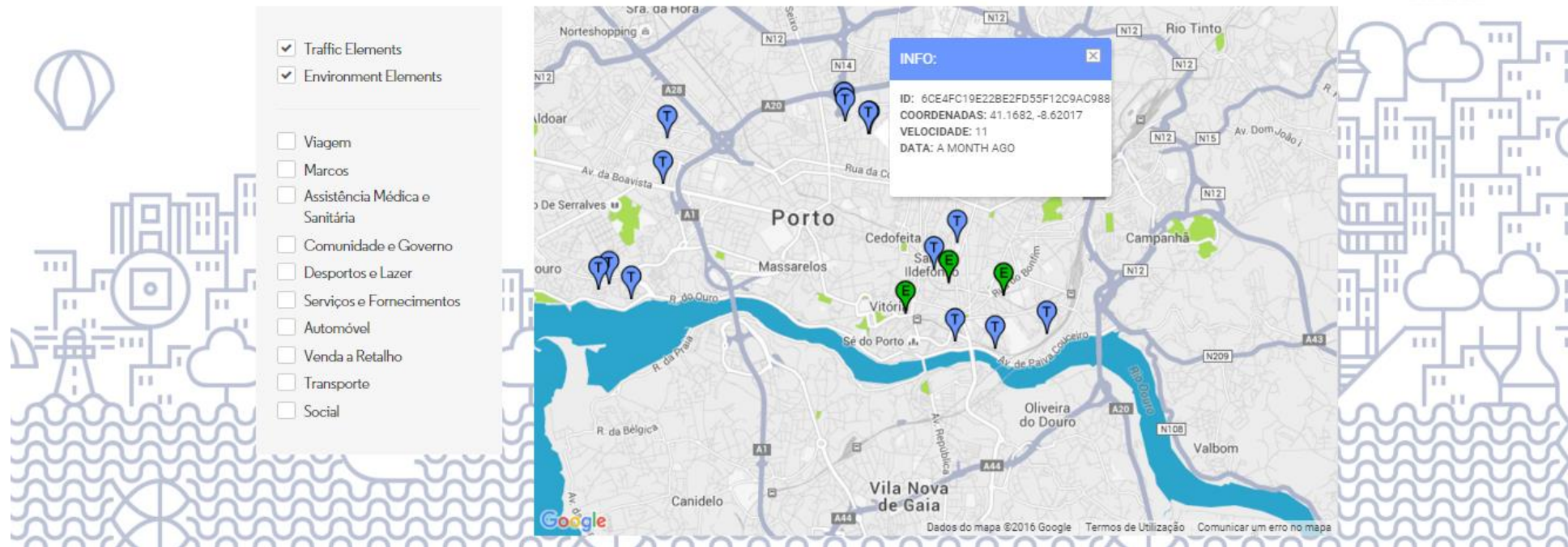






# PORTO OASC/FIWARE NODE

FutureCities sensors data in NGSI: Environment and Traffic events







## NEXT STEPS

### New infrastructures and projects:

- 1000 Ibeacons in bus stops
- 250/500 Ibeacons in the city centre
- Cameras and images analytics for parking management
- Sensors for parking and traffic management



HealthyRoad

**citibrain:**  
EMBERS

Image: Partners in the new solutions



# Porto.

**THANK YOU!**

**Margarida Campolargo**

Head of Smart Cities Unit, Porto Digital

[margarida.campolargo@portodigital.pt](mailto:margarida.campolargo@portodigital.pt)