

Hack Oregon is kombucha.



The Season Begins

MAKING PUBLIC DATA, PUBLIC KNOWLEDGE FROM SEA TO SHINING SEA.



**THIS YEAR WE SELECTED THEMES THAT REPRESENT
ESSENTIAL ELEMENTS OF EQUITABLE, RESILIENT
COMMUNITIES.**

As with many of our projects, a ton of data already exists on these themes. However, much of the information available isn't accessible for computation analysis and is siloed by default. While each of these themes create a unique call to action, are rich with discovery potential, and justify an individual lens of focus, they are all vitally interdependent aspects neighborhood systems. **This is true in Portland, and this is true in every city in America.**

In tech-speak, that means all share cornerstones of literal data infrastructure. Join us for an landmark season as we showcase the power of open data and set the standard for integration across the nation on our [CIVIC platform](#).

New Project Themes

DISASTER RESILIENCE

TRANSPORTATION SYSTEMS

HOUSING AFFORDABILITY

LOCAL ELECTIONS

URBAN DEVELOPMENT

[VIEW PROJECT DESCRIPTIONS](#)

[BROWSE OPEN VOLUNTEER ROLES](#)

Transportation

State of Motion



By the people, for the people.

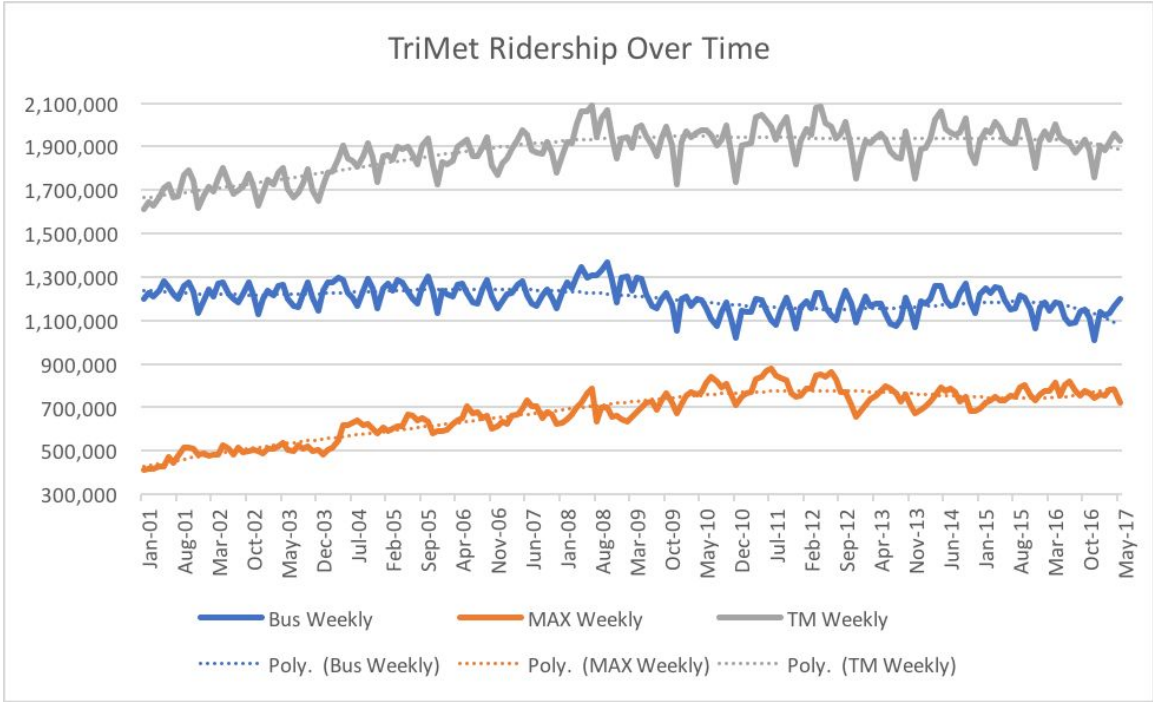
WE'RE BUILDING OPEN SOURCE, DATA-DRIVEN SYSTEMS TO ADDRESS BIG CIVIC ISSUES.

From topics like hunger to minimum wage, many of Hack Oregon's projects have had a direct impact on policy and decision making in Oregon. By building on open source code and working with data in creative ways, we're able to approach complex information challenges and reveal critical insight that would not have existed any other way.

OPEN SOURCE IS POWERFUL, AND SO ARE YOU.



Declining Ridership in PDX Public Transit 2001-2016



TriMet Board of Directors Meeting 9-27-17
(Start at 1:54:00)

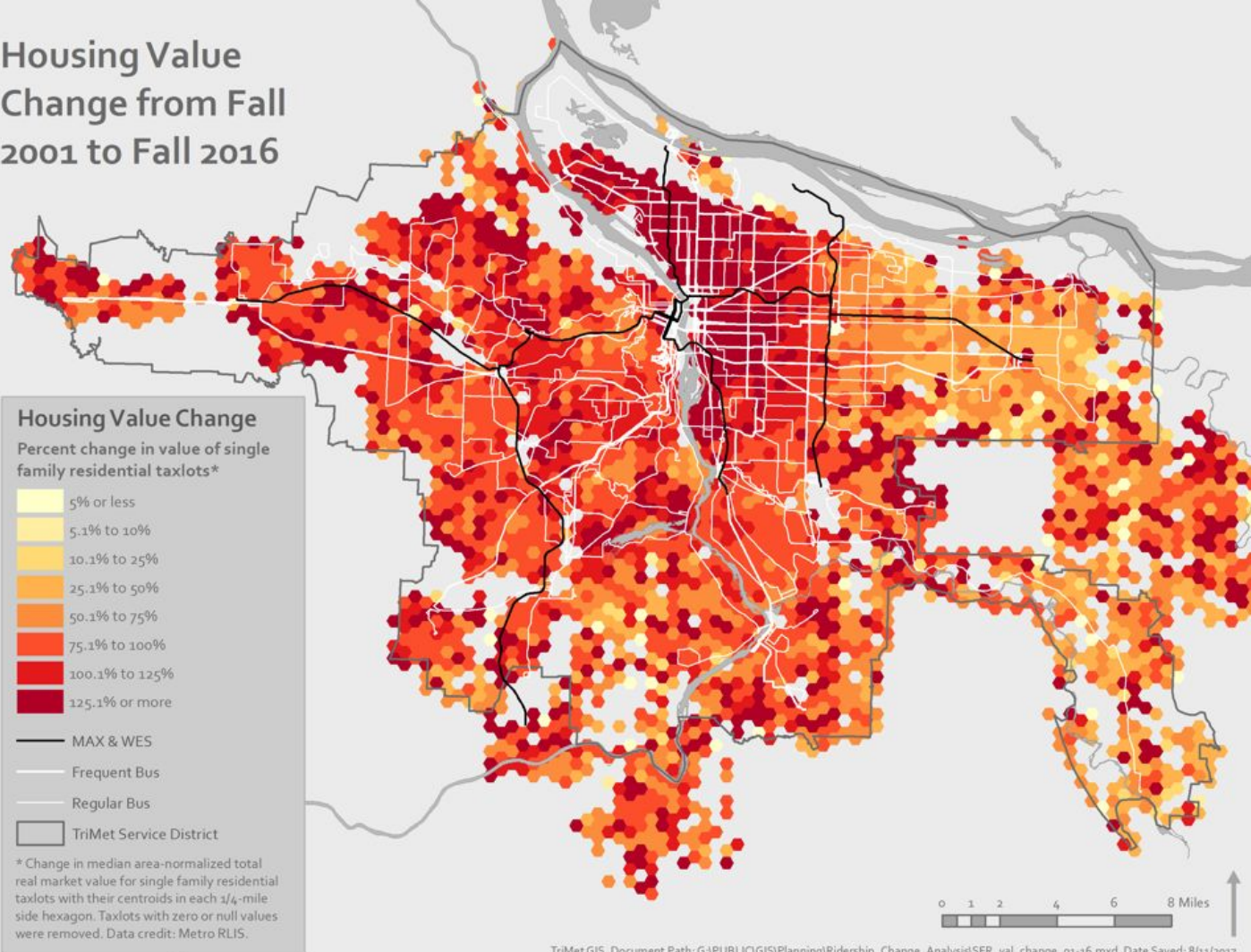


Nov 14, 2017

In Portland, Economic Displacement May Be A Driver of Transit Ridership Loss

[Link to full article](#)

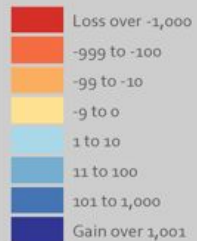
Housing Value Change from Fall 2001 to Fall 2016



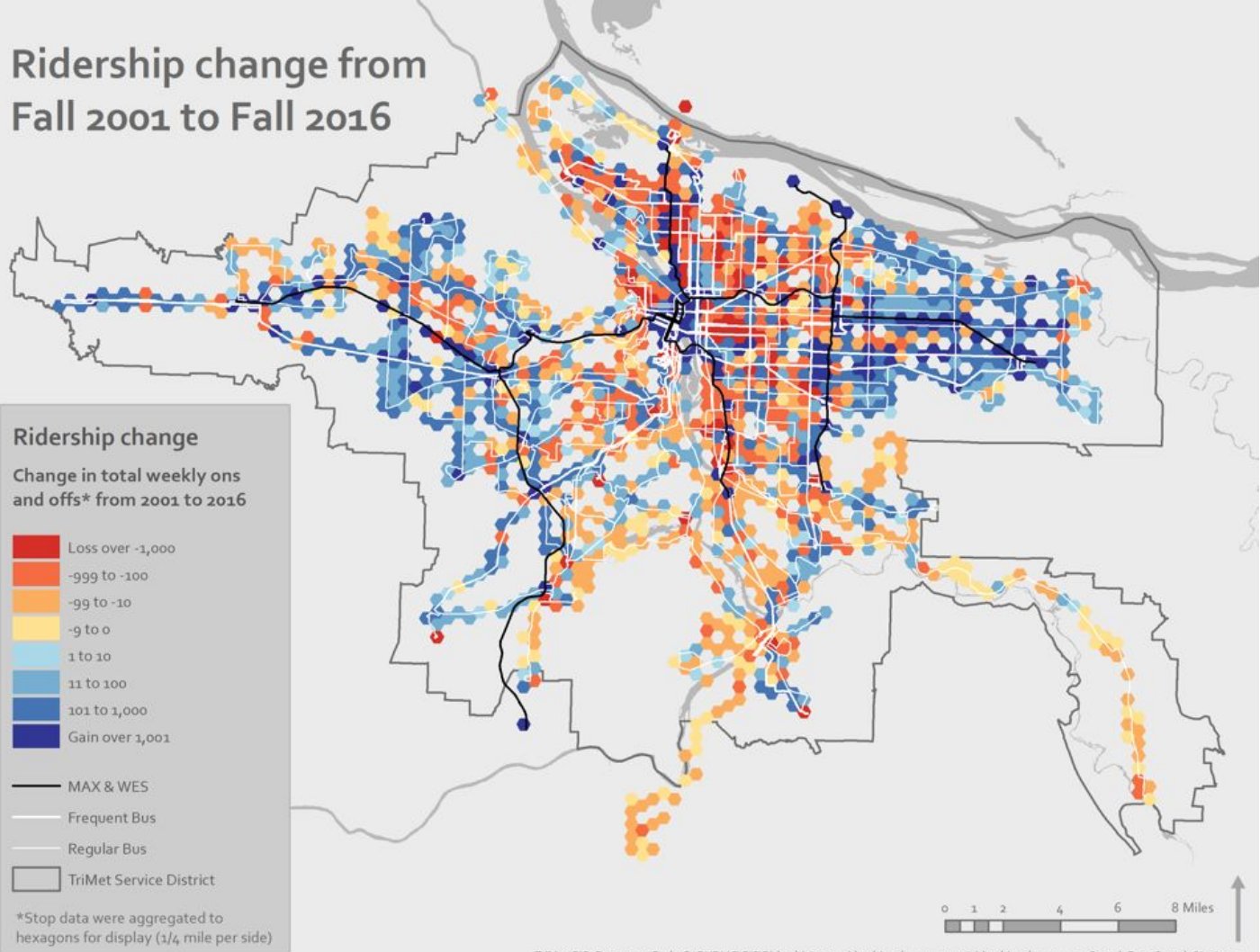
Ridership change from Fall 2001 to Fall 2016

Ridership change

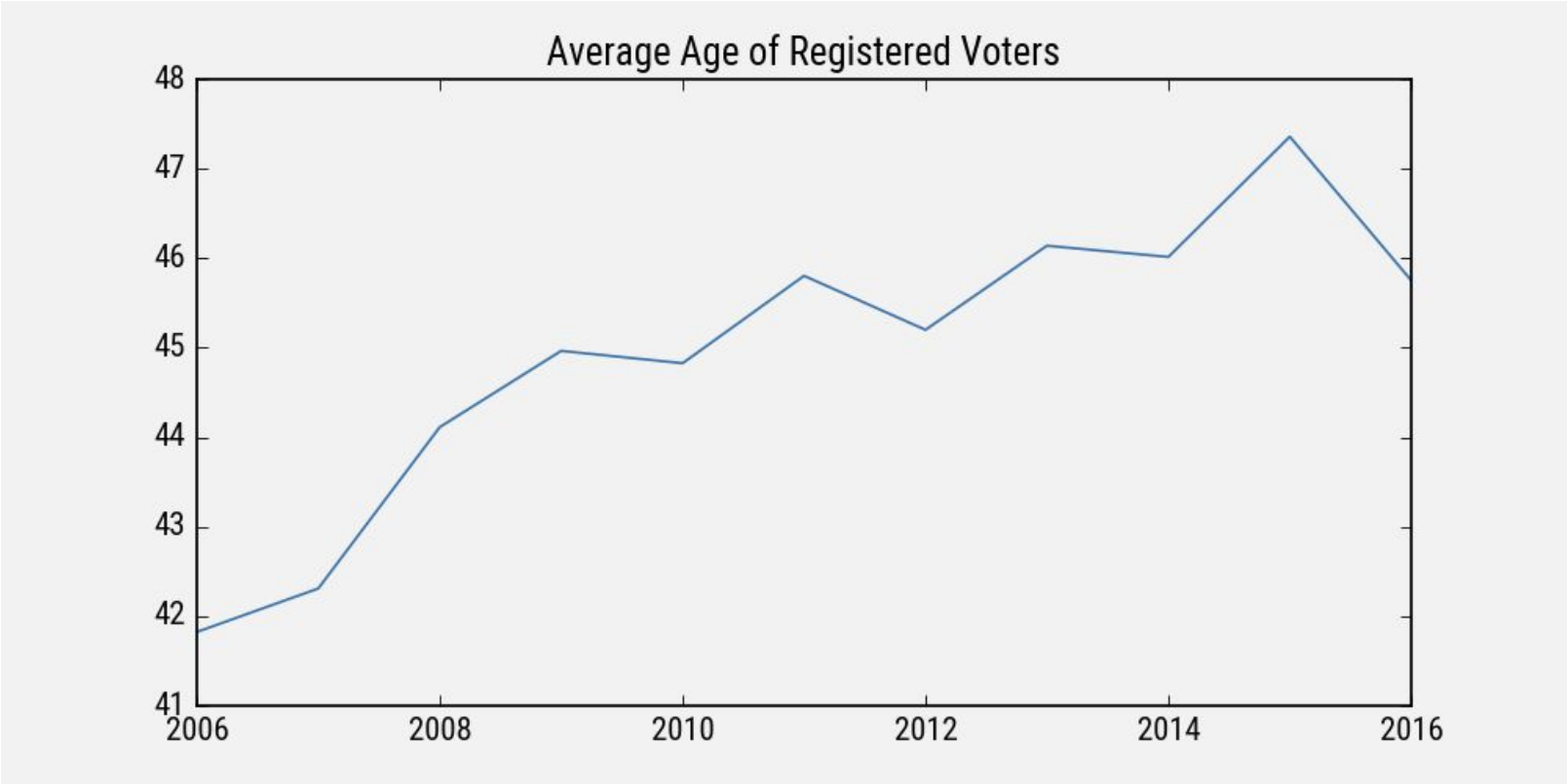
Change in total weekly ons
and offs* from 2001 to 2016



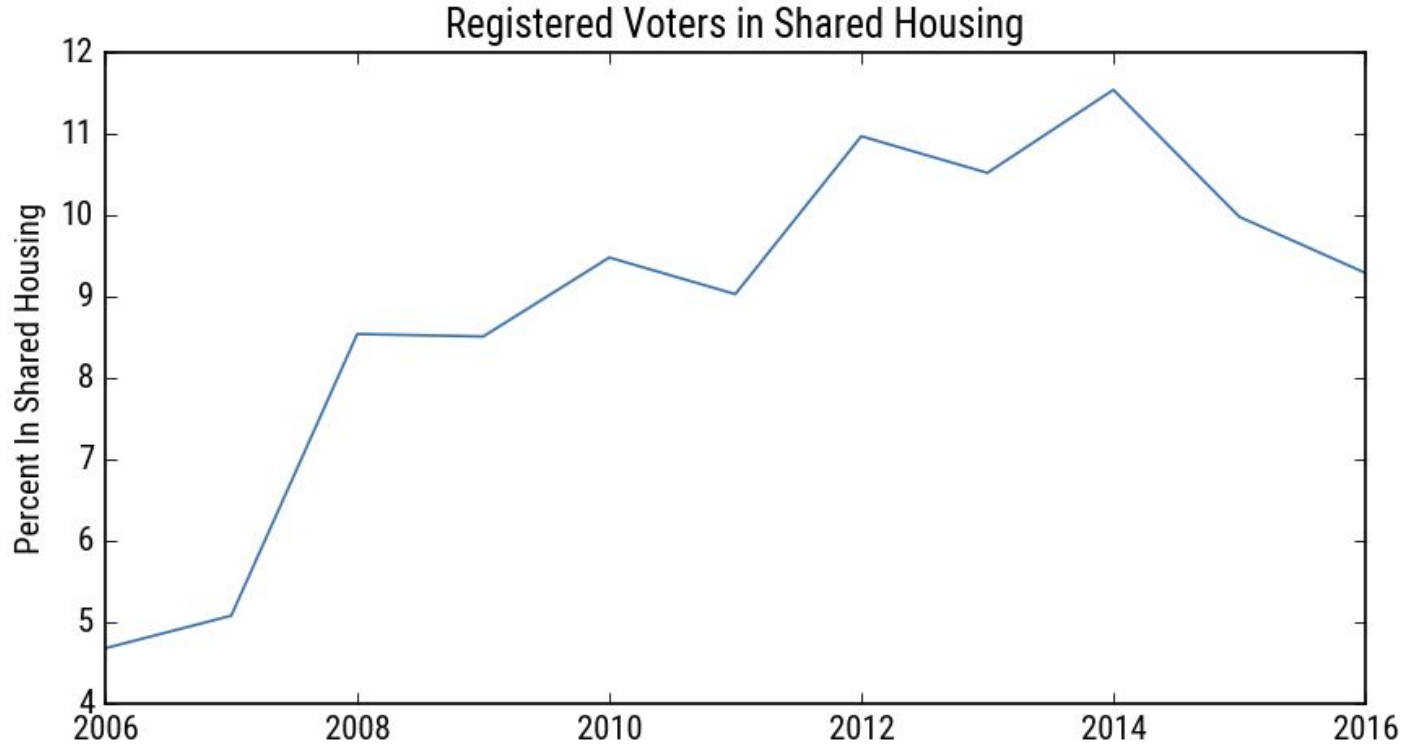
*Stop data were aggregated to
hexagons for display (1/4 mile per side)



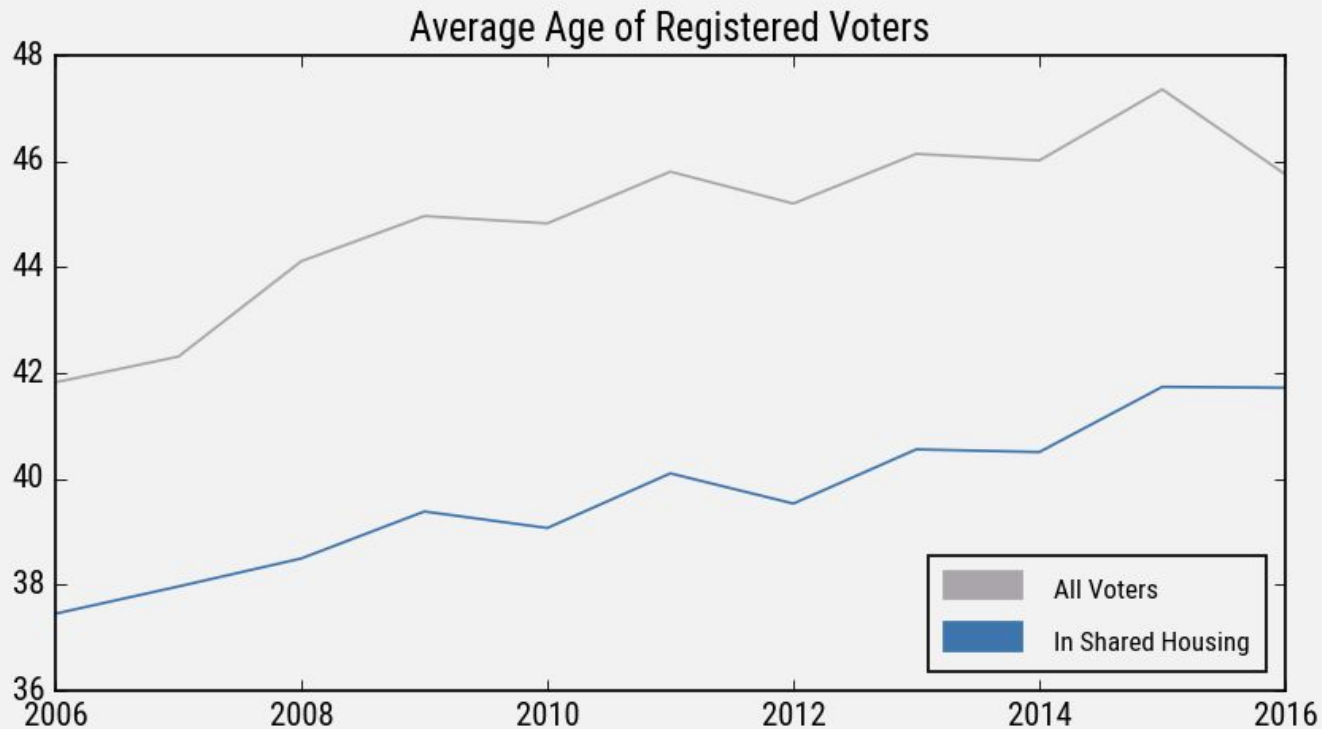
Portland is Aging



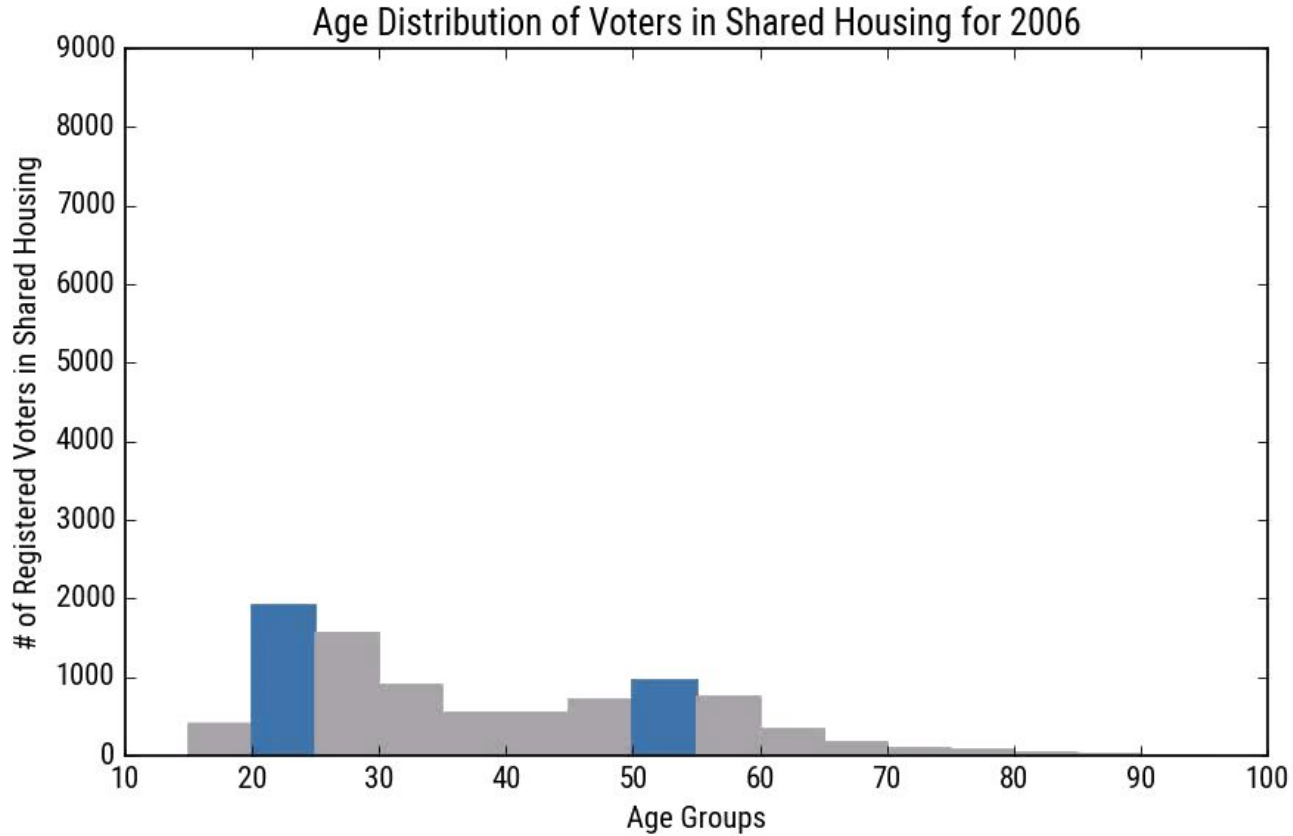
Shared Households are Trending



...and trending older
(though still younger than the average Portlander)



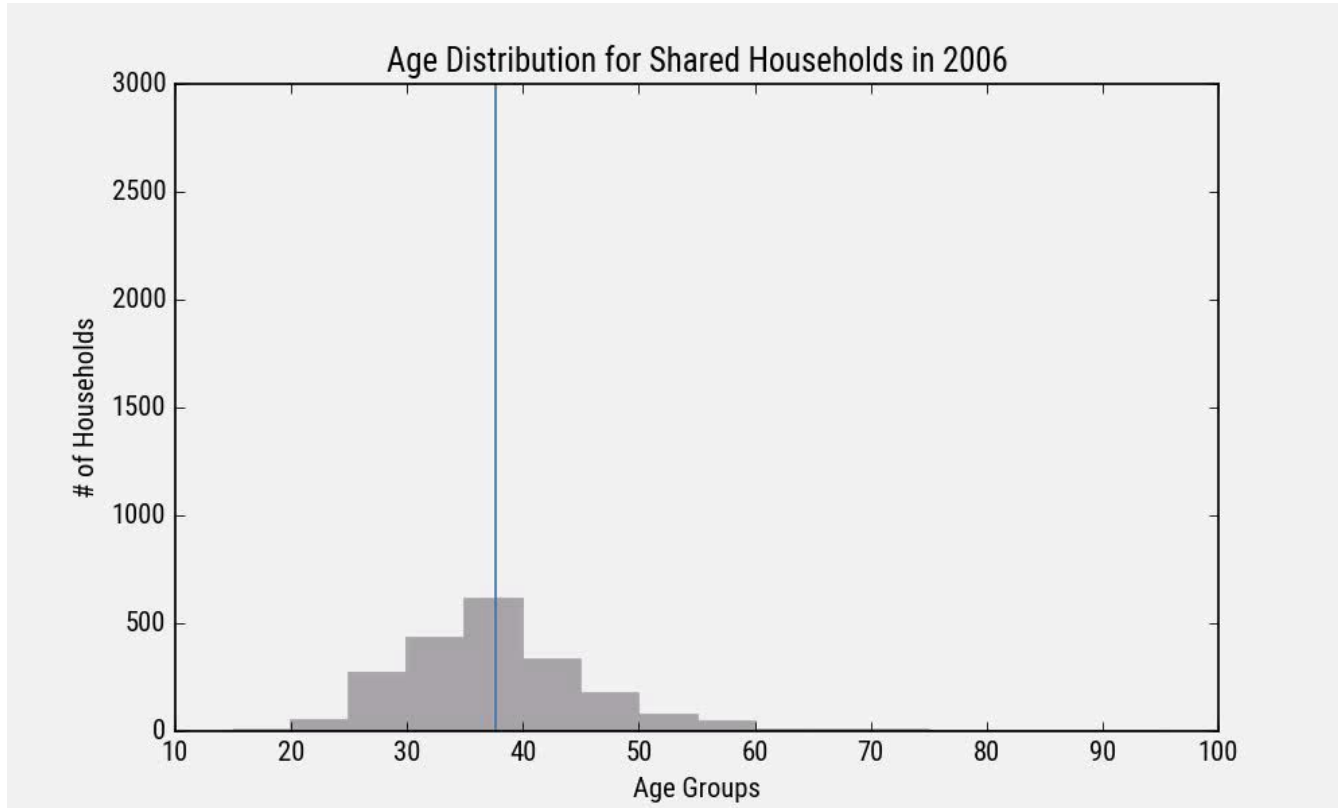
Hmmmm....



Intergenerational Shared Households

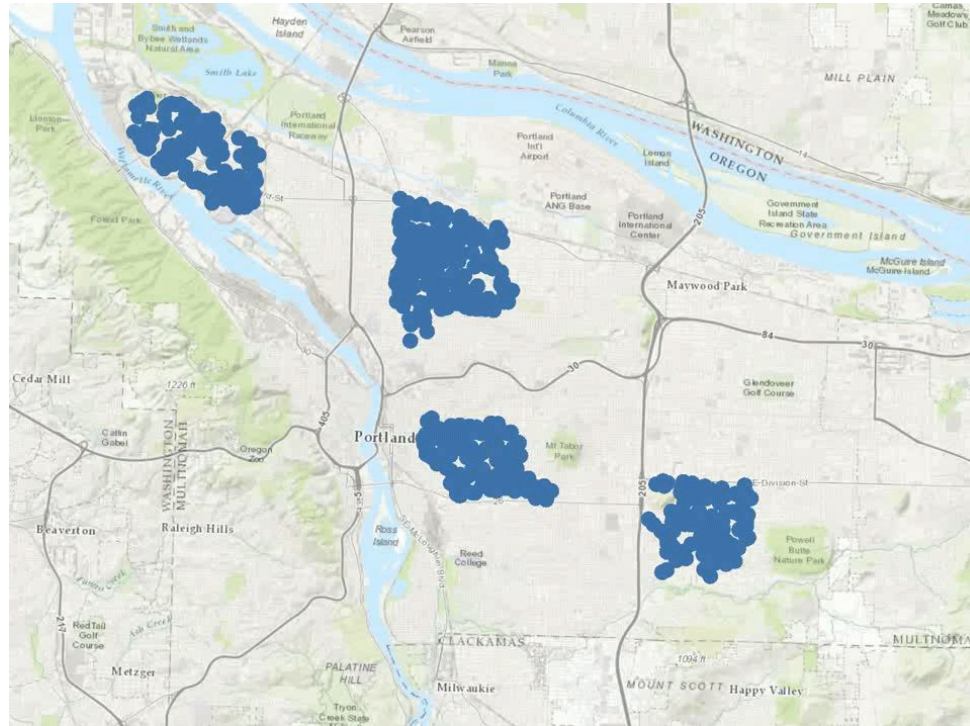


Built By  Hack Oregon



More of a scramble than a push...

Voters From Four Neighborhoods Who Were 21 in 2006 Have Dispersed Across the City



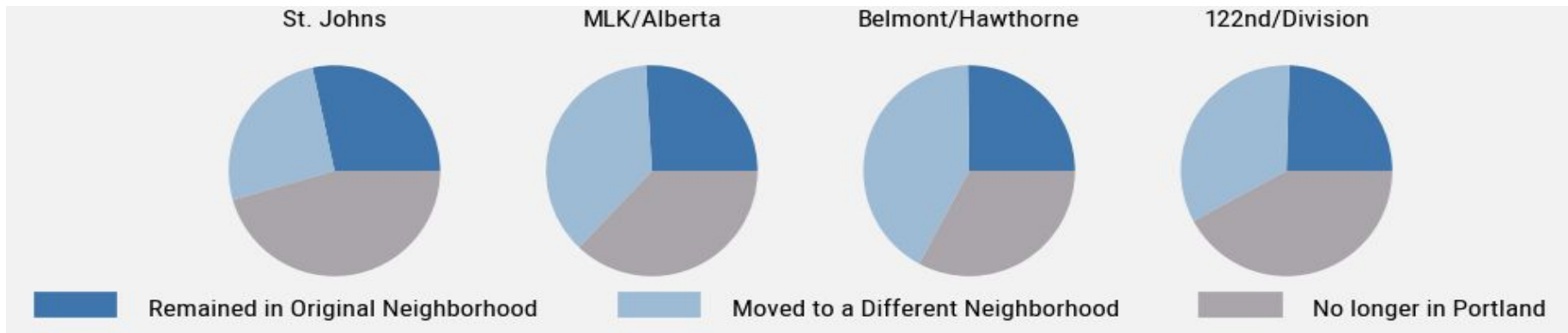
Diverse range of neighborhood types show consistent patterns.

Following 21 year olds from 2006

~ 25% chance person still lives in neighborhood

~ 30-40% moved to any other random neighborhood

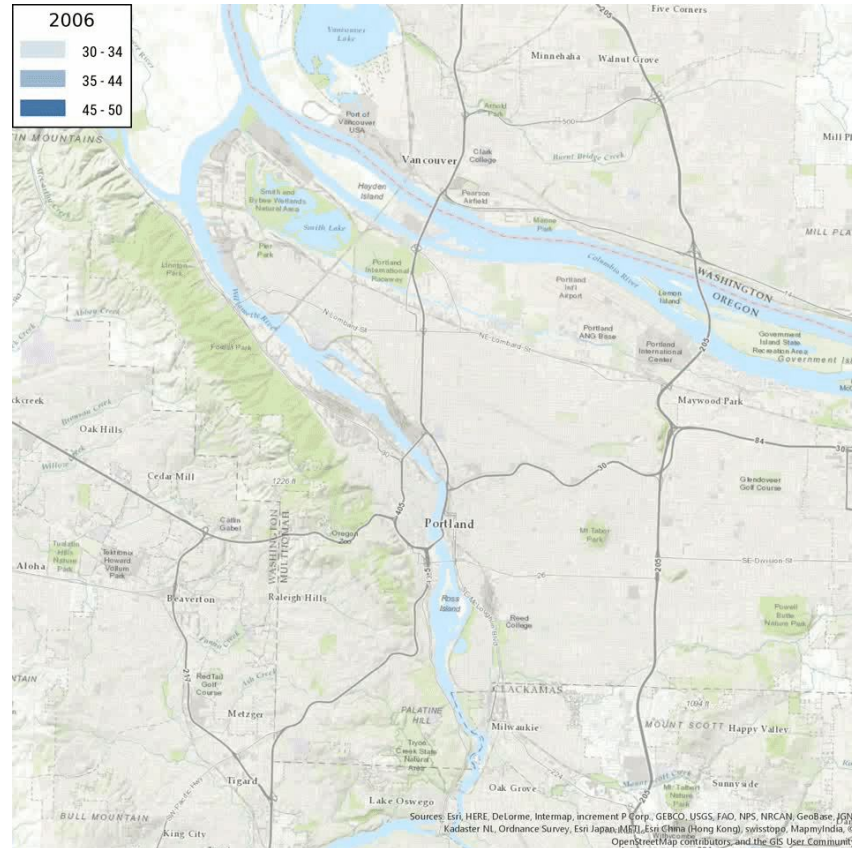
~40-45% totally left Portland



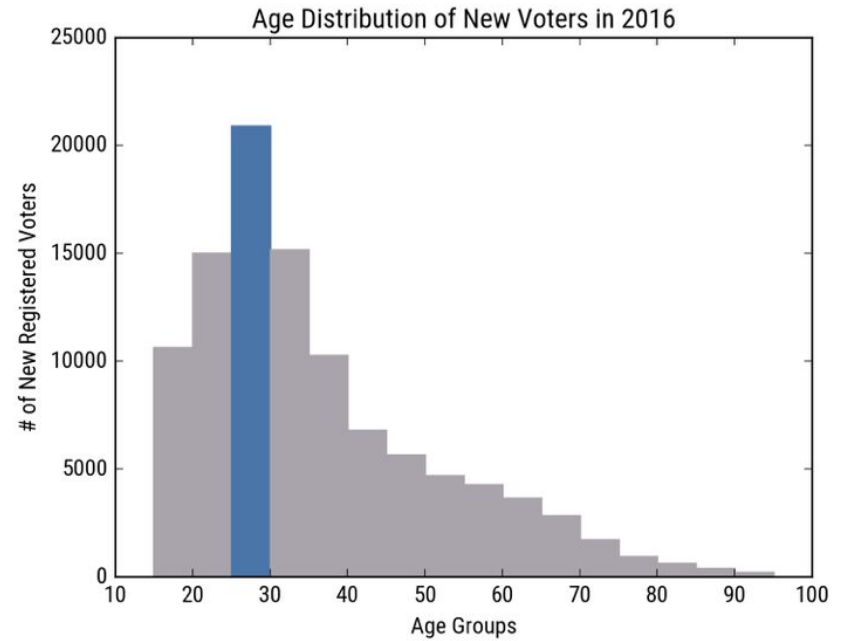
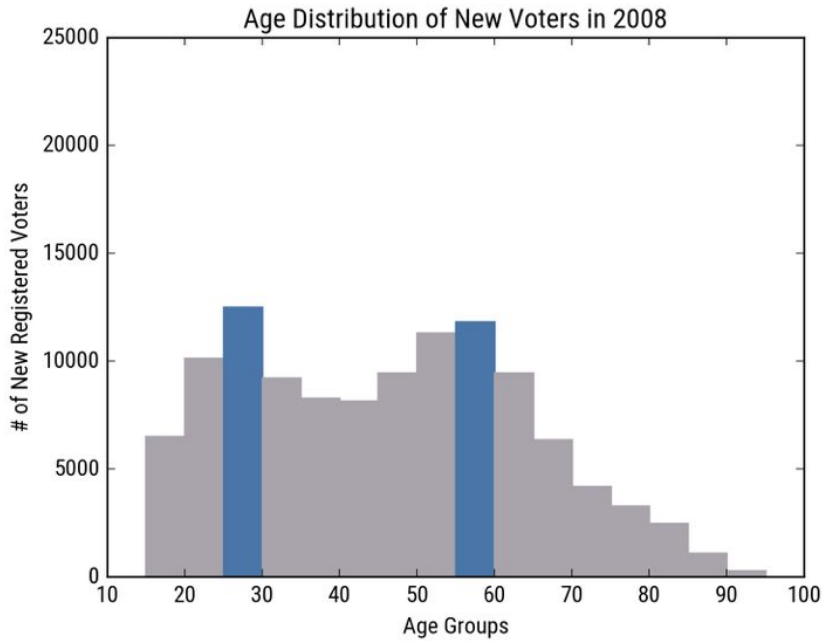
Built By  Hack Oregon

Inner Squeeze

Age of Registered Voters Living in Shared Housing by Neighborhood



Whoa, really?



Areas of exploration moving forward:

How does increasing density impact transit ridership?

How can this be explained after slowed usage in 2013?

Declining use or declining need?

Are alternate modes of transportation impacting transit ridership?

Is displacement to suburban neighborhoods responsible for loss in ridership?

Will last mile solutions be effective in regaining ridership?

Is this an infrastructure issue?

How do we plan for what's coming next?

Does transit work less well for people who need it the most?

Do these trends hold up nationally?

Going Fungal?



Transportation data represents some of the most consistent, plentiful, and readily available real time information in the public domain.

We can find out the answers to these questions.

We just need a model big enough to fit.



Catherine@hackoregon.org