

FIWARE - Smart City SDK

Jose Gonzalez

FIWARE International Cooperation

fiware-mundus-req@lists.fi-ware.org



<http://www.fiware.org>

Follow [@FIWARE](https://twitter.com/FIWARE) on Twitter!

WHAT FIWARE BRINGS

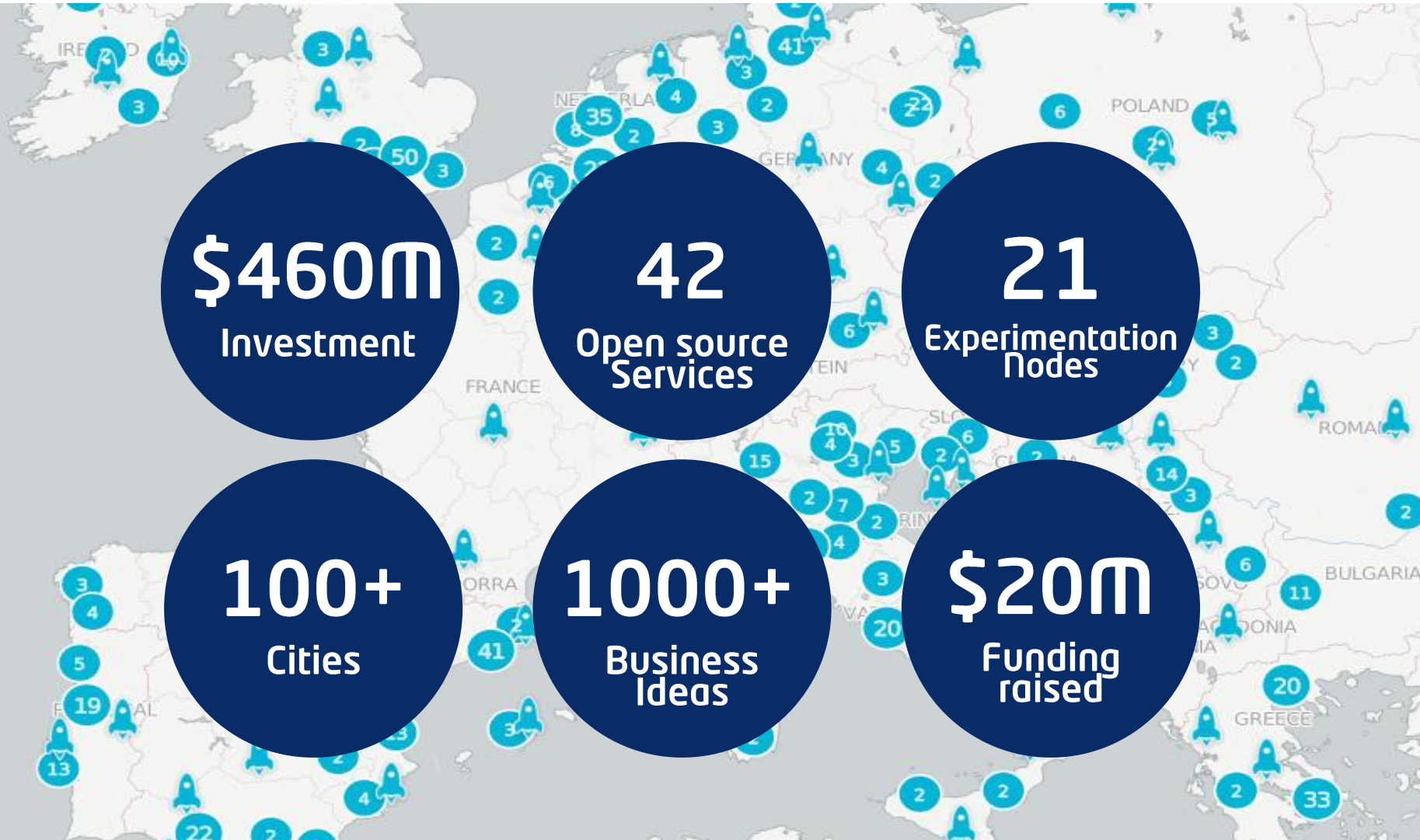
PLATFORM?
SOFTWARE?
VENDOR?

WHAT FIWARE BRINGS

OPEN
SUSTAINABLE
GLOBAL

COMMUNITY

FIWARE in numbers



Members



Atos



ENGINEERING



orange™



Telefonica



FundingBox



Smart Cities Lab



zabala
innovation consulting

Strategic Alliances



European
Commission



NIST



ETSI
World Class Standards



tmforum



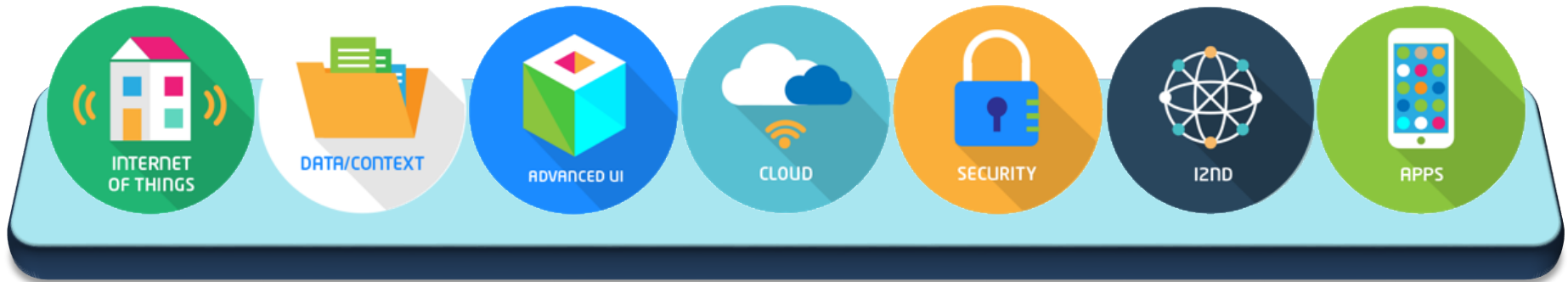
openstack.
CLOUD SOFTWARE



OPEN & AGILE SMART CITIES

Interested to join? Let us know!

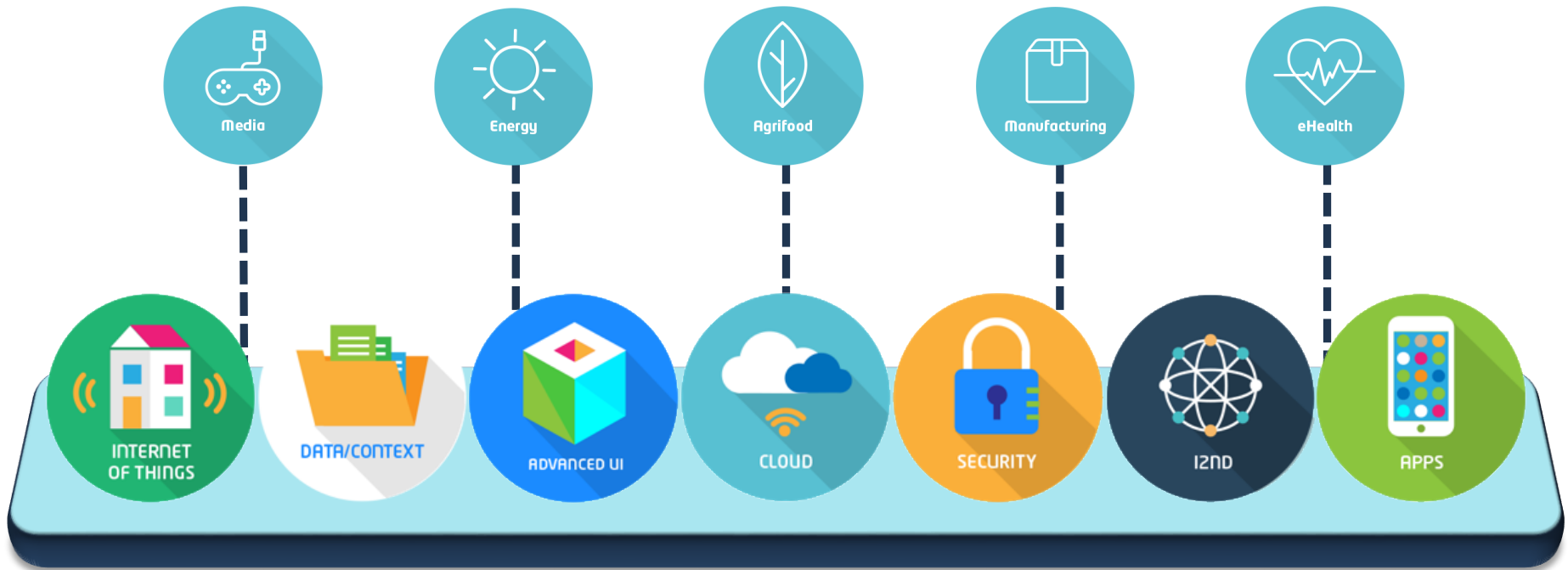
FIWARE Technology



TAKE THE TOUR 

 FIWARE Academy

FIWARE Technology



TAKE THE TOUR 

 FIWARE Academy

FIWARE Catalogue

Home Enablers Bundles Tools

FIWARE GENERIC ENABLERS

Generic Enablers (GE) offer a number of general-purpose functions, offered through well-defined APIs, easing development of smart applications in multiple sectors. They will set the foundations of the architecture associated to your application.

Specifications of FIWARE (GE) are public and royalty-free. You can search for the open source reference implementation as well as alternative implementations, of each FIWARE GE in the FIWARE Reference Architecture.

What's New
Last updated Generic Enablers.

Data/Context Management
Easing access, gathering, processing, publication and analysis of context information at large scale.

Internet of Things (IoT) Services Enablement
Make connected things available, searchable, accessible, and usable.

Data/Context Management #2

<p>Cloud Messaging - AEON</p> <p>AEON is a cloud platform to create applications with real time communications channels.</p> <p>Incubated GEs/GERis Data/Context Management</p>	<p>Stream-oriented - Kurento</p> <p>Powerful software stack devoted to simplify the creation of complex interactive multimedia applications by exposing a rich family of APIs on top of a J2EE application</p> <p>FIWARE GERis Data/Context Management</p>	<p>Publish/Subscribe Context Broker - Orion Context</p> <p>Orion Context Broker is an implementation of NGS19 and NGS10 with persistence storage based in MongoDB</p> <p>FIWARE GERis Data/Context Management</p>

Publish/Subscribe Context Broker - Orion Context Broker #3

Overview Creating Instances Documentation Downloads Instances Terms and conditions

FIWARE GERis

Chapter: Data/Context Management

Version:

Updated: 2015-10-11

Contact Person: Ask in Stack Overflow with tag fiware-orion

[Send feedback](#)

What you get

The Orion Context Broker is an implementation of the Publish/Subscribe Context Broker GE, these interfaces, clients can do several operations:

- Register context producer applications, e.g. a temperature sensor within a room
- Update context information, e.g. send updates of temperature
- Being notified when changes on context information take place (e.g. the temperature of the temperature each minute)
- Query context information. The Orion Context Broker stores context information updated on that information.

Apart from Orion Context Broker, there are other related components that you may find useful. It implements a connector for context data coming from Orion Context Broker and aimed to be used with HDFS, CKAN or MySQL. Steelskin PEP is a proxy meant to secure Orion Context Broker, by validating it against the Access Control component.

Why you get

If you are developing a Data/Context scenario, a broker like the Orion Context Broker is a must.

FIWARE GitHub: <https://github.com/Fiware>

FIWARE: born in Europe, meant to be global!



FIWARE Marketplace

Powered by
 **FIWARE**

 **FIWARE** Internet
READY of Things

 **FIWARE** Training



OpenMove

The OpenMove team moved very quickly from the product design phase to the offer on the market. After an analysis of data about the current market trends and potential, they moved to the phase of prototype design.



Sensape

Sensape revolutionizes the way brands advertise their product using artificial intelligence.



SmartAppCity

SmartAppCity is a modular app for smart phones addressed to local administrations. The app brings together all the city services, boosting the commercial sector, generating value to citizens and tourists, and improving the quality of life. Under a PPP framework, the municipalities show their open data to serve the citizens, and the city shops and businesses offer their products and services.



Spero

Spero City is an integrated web-based report and decision support system for occurrences in urban space. Spero City supports citizen and IoT reporting and connections to social networks.



TalkyCar

TalkyCar connects your vehicle with your smartphone to track all your trips scoring your driving style to detect fuel efficiency, providing advice or calling the medical services in case of accident...etc like over RPM alarms.

ubiwhere
 SUITING THE FUTURE

Ubiwhere

Ubiwhere is a company dedicated to research and develop software for Smart Cities and the Future Internet sectors. The company's internal focus is now on the Citibrain brand, focused on unified systems for Smart Cities.



URBI

URBI is the solution for the car sharing users. URBI is shared-use mobility aggregator that enables people to find the best solution to reach a destination.



VIUR

VIUR develops a solution that allows anyone with or without technical skills to do business related analytics in different business areas, to connect the enterprise systems and/or cloud services and, without any code or scripting, generate instant insight.



WiseTown

WiseTown stands for "Web Information Streams Enhancer for your Town". The goal of this solution is to collect information from different streams to identify the issues that affect the city in several areas: urban renewal, garbage collection, public safety, transportation, social services and environmental problems.

Why an Open Platform for Smart Cities?

Avoid vendor lock-in



Community of developers



Not any standard



Interoperability of apps

True innovation

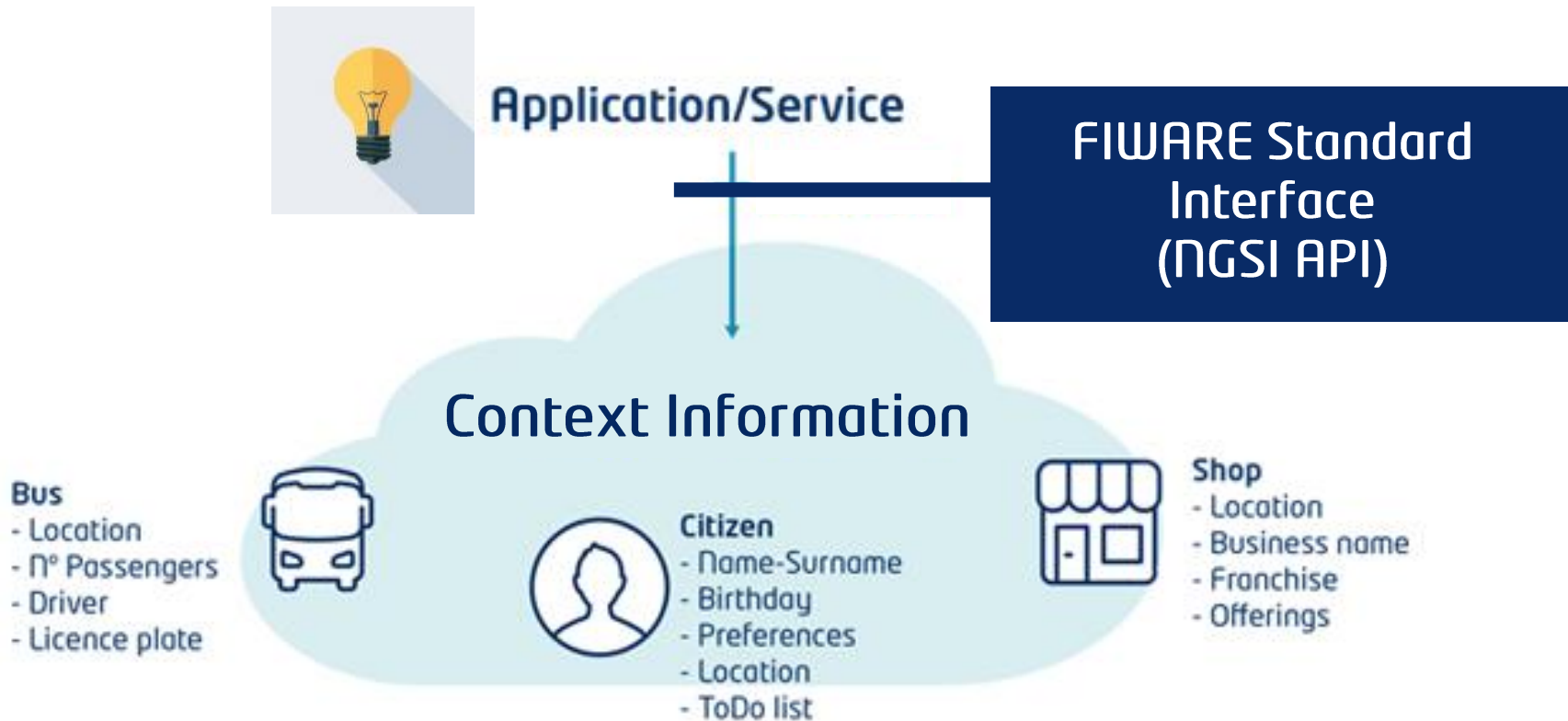
Non-intrusive with existing platforms



Being "Smart" requires being "Aware"



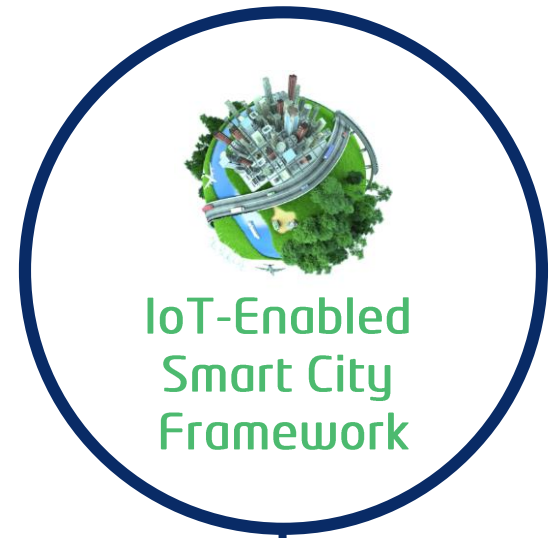
Being "Smart" requires being "Aware"



White House Smart Cities Initiative

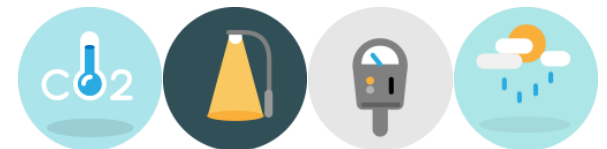


NIST



 **FIWARE**
Cities and Apps

 **FIWARE**
12 Data Models





1. Innovation Centers: Test and showcase IoT-Ready devices and solutions, attracting the best Smart City projects



2. Platform: offer the technology and resources to develop and test projects, gathering and offering open data



3. University: Agreement with universities to provide access to the labs, equipment and patents



4. Challenge IoT: Open call to present ideas, awarding the best and opening a network of sponsors



5. Market: Marketing support and access to the market



FIWARE
CAN
MAKE IT
EASY

Jose Gonzalez

fiware-mundus-req@lists.fi-ware.org

www.fiware.org